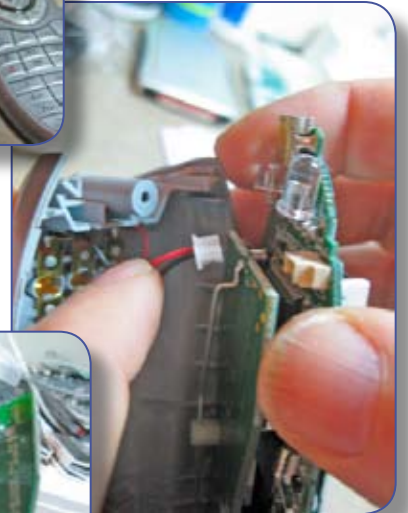
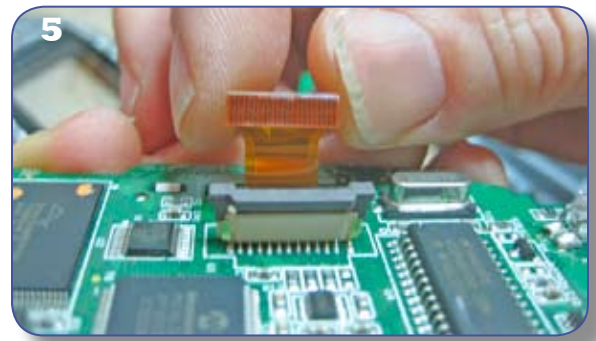


## How to install your new LCD screen

1. To open your remote, start by removing the two screws - one in the battery compartment and one at the top of the remote. Use a small Phillips head screwdriver.
2. Using one of the pry tools (smaller or larger, whichever one you like), force the tool into seam of the clamshell casing near the bottom of the remote on the left or right side. Once you get the tool into the remote, angle it down a bit and, while pressing it into the top casing, simply slide it up one side. This will pop all the locking tabs very nicely without marring the surface of the remote. Then do the same on the other side.
3. Remove the top half and set it aside. Then, remove the two screws that are at the midway point on each side of the logic board and detach the USB port lens. You can gently lift the logic board *almost* out, but you also need to detach the small power connector that is attached to the charging contacts. Just look on the underside of the logic board and gently pull the mini-plug out of the receptacle. Now you can lift the logic board out of the casing. If the board seems to stick a little, don't be concerned. There is sometimes an overly long piece of sticky tape that is part of the protective covering on top of the buttons. It sometimes sticks to the side of the remote casing. This is not intentional, and you can just tug a little to make it come loose from the plastic casing or use a utility knife to cut the tape away from the sides.
4. At this point the board should be out. Turn the board over so that the LCD screen is facing down. If you have an 890 (like the picture to the right), you will see the RF daughter board – that's the small logic board 'floating' on top of the main board. To get to the LCD screen connector, this board needs to be removed (this step is omitted on the 880 model). Simply pull the RF board straight up and off and set it aside.



5. Now you will be able to see where the LCD screen is connected to the logic board - a simple ribbon cable. To detach the cable from the board, pull up on the grey top of the ribbon cable connector. It just needs to be lifted until you feel resistance. **It does not need to be lifted off.** The ribbon cable can then be pulled out of the connector. It should come free with no effort at all.



6. With the cable free, all you need to do is squeeze the 4 pressure-fitted white tabs that are around the perimeter of the LCD panel. They just need to be moved slightly to unclip from the logic board. Now you can remove your old screen.



7. Install the new screen by reversing the steps - clipping it in, threading the ribbon cable through the hole in the logic board and into the receptacle. Push the cable in so that the 90 degree bend is at the top of the receptacle and press the grey connector down firmly to lock the cable in. If you have an 890, re-install the daughter board. Pay close attention that the pins on both connectors on the daughter board (there are two) are aligned correctly. Sometimes the board will feel like it is installed correctly, but if you look you will see an entire row of pins sitting *outside* the connector. If you don't see any pins exposed, everything is where it should be. Re-attach the small white power connector (metal contacts should be facing down so you don't see them. The plug can only go in one way, so don't worry). Carefully seat the logic board back into the bottom casing. Make sure it is seated correctly! No part should be raised; it should feel nice and flat. Pay particularly close attention to the bottom and make sure that it is seated nicely against the 'learning lens' stops on each side. Slight misalignments will affect the way your buttons operate. Attach the two logic board screws.



8. Now re-assemble the clamshell halves. Start by putting the USB lens in first. Make sure the front lens is aligned with the USB port and snap one side in and then the other (you will feel and hear this). Now, hold the bottom of the casing in one hand and the top in the other and align the locking tabs so that they are ready to connect to each other and, starting near the top push firmly with your thumbs on both sides of the Off button – one thumb to the left and the other on the right. Try to push evenly, though it is fine if one side begins snapping in before the other. You should feel and hear a very positive 'snap'. Work your way down the sides – there are four locking tabs on each side spaced evenly. Move to the middle and finally the bottom, pushing and snapping as you go. Re-install the two screws – at the top and in the battery compartment.



Test your new screen! Feel free to contact me if you have any questions.